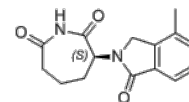


Product Name : BTX161
Cat. No. : PC-35629
CAS No. : 2052301-24-1
Molecular Formula : C₁₅H₁₆N₂O₃
Molecular Weight : 272.304
Target : Casein Kinase
Solubility : 10 mM in DMSO



Biological Activity

BTX161 is a thalidomide analog that mediates degradation of **CK1 α** better than lenalidomide in human AML cells and activates DDR and p53, while stabilizing the p53 antagonist MDM2.

BTX161 upregulates all the Wnt targets including MYC and does not affect MDM2 mRNA expression.

References

Minzel W, et al. *Cell*. 2018 Aug 20. pii: S0092-8674(18)30973-5. doi: 10.1016/j.cell.2018.07.045.

Caution: Product has not been fully validated for medical applications. Lab Use Only!

E-mail: tech@probechem.com